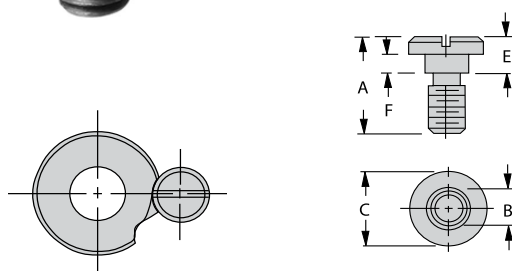


LOCKSCREWS AND CLAMPS

LOCKSCREWS: MILD STEEL, BLACK OXIDE
ROUND CLAMPS: MILD STEEL, BLACK OXIDE

LOCKSCREWS



The most popular locking device for renewable drill bushings. Use on either the "slip" or "fixed" side of a slip-fixed bushing. Simple, strong, compact, and economical.

STANDARD MOUNTING (INCH)

PART NO. (PACK OF 5)	A	B DIA	C DIA	E	F	THREAD
LS-0-PACKOF5	7/16	3/16	5/16	3/16	.105/.100	#8-32
LS-1-PACKOF5	5/8	3/8	5/8	1/4	.138/.132	5/16-18
LS-2-PACKOF5	7/8			3/8	.200/.194	
LS-3-PACKOF5	1	7/16	3/4	3/8	.200/.194	3/8-16
LS-4-PACKOF5*	1-1/16			7/16	.231/.225	
LS-5-PACKOF5*	1-1/8			1/2	.263/.257	

STANDARD MOUNTING - THINWALL (INCH)

TW-1-PACKOF5	7/16	3/16	5/16	3/16	.105/.100	#8-32
TW-2-PACKOF5	1/2	1/4	3/8	1/4	.138/.132	#10-32
TW-3-PACKOF5	11/16		7/16	3/8	.200/.194	
TW-4-PACKOF5	7/8	3/8	9/16	1/2	.263/.257	5/16-18
TW-5-PACKOF5	1	3/8	5/8	5/8	.325/.319	
TW-7-PACKOF5	3/4			3/8	.200/.194	

STANDARD MOUNTING (METRIC)

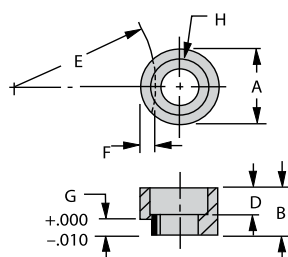
LSM-1-PACKOF5	15mm	7.5mm	13mm	6mm	3.3mm	M5
LSM-3-PACKOF5	18mm	9.5mm	16mm	8mm	4.3mm	M6
LSM-5-PACKOF5	22mm	12mm	20mm	10mm	5.8mm	M8
LSM-7-PACKOF5	32mm	15mm	24mm	12mm	7.3mm	M10

PROJECTED MOUNTING (METRIC)

LSM-2-PACKOF5	18mm	7.5mm	13mm	9mm	6.3mm	M5
LSM-4-PACKOF5	22mm	9.5mm	16mm	12mm	8.3mm	M6
LSM-6-PACKOF5	27mm	12mm	20mm	15mm	10.8mm	M8
LSM-8-PACKOF5	38mm	15mm	24mm	18mm	13.3mm	M10

* For extended-range bushings.

ROUND CLAMPS



Alternative to lock screws when using the "fixed" side of a slip-fixed SF bushing. Round clamps have less clearance under their heads, to clamp bushings tighter (which is why you cannot use them on the bushing's "slip" side). Use them with a Socket-Head Cap Screw.

STANDARD MOUNTING (INCH)

STANDARD MOUNTING (INCH)							H SOCKET- HEAD CAP SCREW	REPLACES LOCK SCREW	
PART NO.	A DIA	B	D	E	F	G			
RC-01	5/8	5/16	5/32	17/32	.109	.125	5/16-18	LS-1	
RC-02		7/16	7/32	29/32	.125	.188		LS-2	
RC-03	3/4	1/2	9/32	1-13/32	.156	.188	3/8-16	LS-3	
RC-04*		17/32	1/4	2-1/2		.219		LS-4	
RC-05*		9/16				.250		LS-5	

STANDARD MOUNTING (METRIC)

RCM-1	13mm	8mm	4mm	9.5mm	2.8mm	3mm	M5	LSM-1
RCM-3	16mm	10mm	5mm	15mm	3.3mm	4mm	M6	LSM-3
RCM-5	20mm	12mm	5mm	30mm	3.8mm	5.5mm	M8	LSM-5
RCM-7	24mm	16mm	7mm	80mm	4.5mm	7mm	M10	LSM-7

* For extended-range bushings.